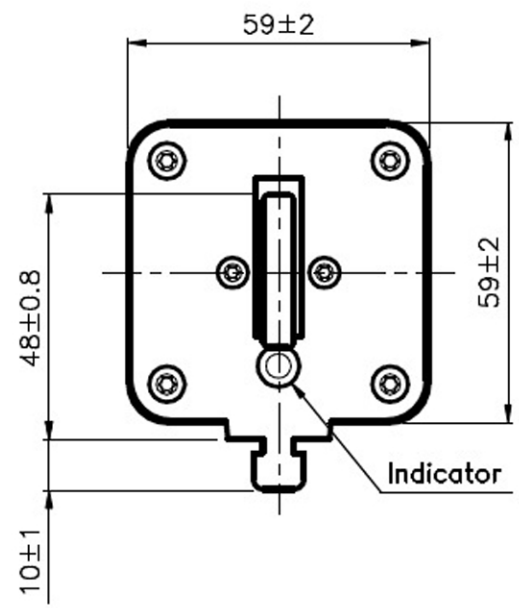
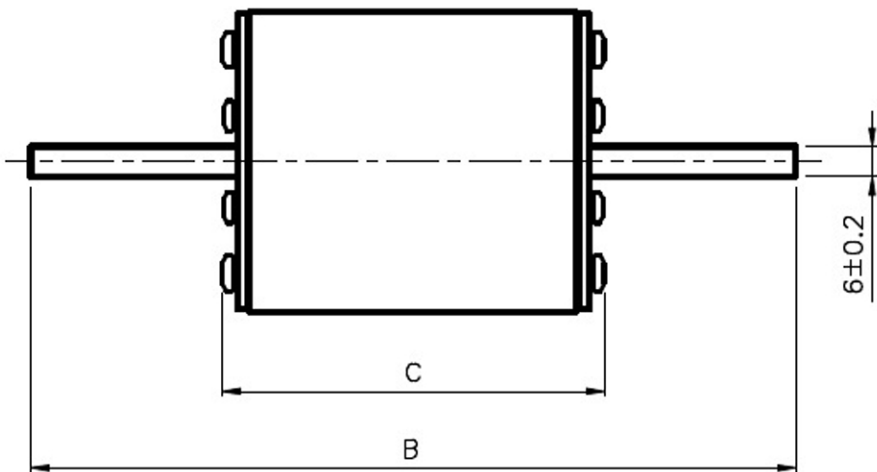
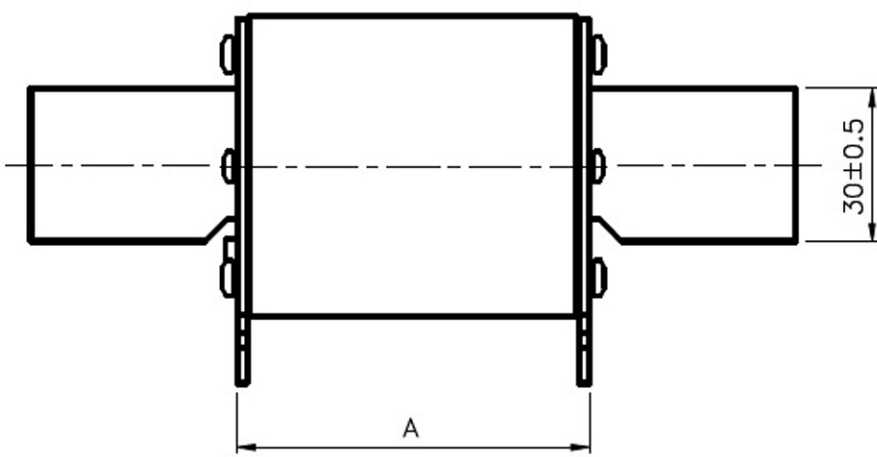




n	
m	
l	
k	
i	
g	
f	
e	
d	
c	
b	
a	
Correction	
Date	9008 9630
Dwg.	AJ BC
Control	TJ TJ



Pos.	Type	A	B	C
1	2SHT	$69 \pm 2.5$	$150 \pm 2.5$	$74 \pm 2.5$
2	2SHT	$45 \pm 1.5$	$150 \pm 2.5$	$50 \pm 1.5$

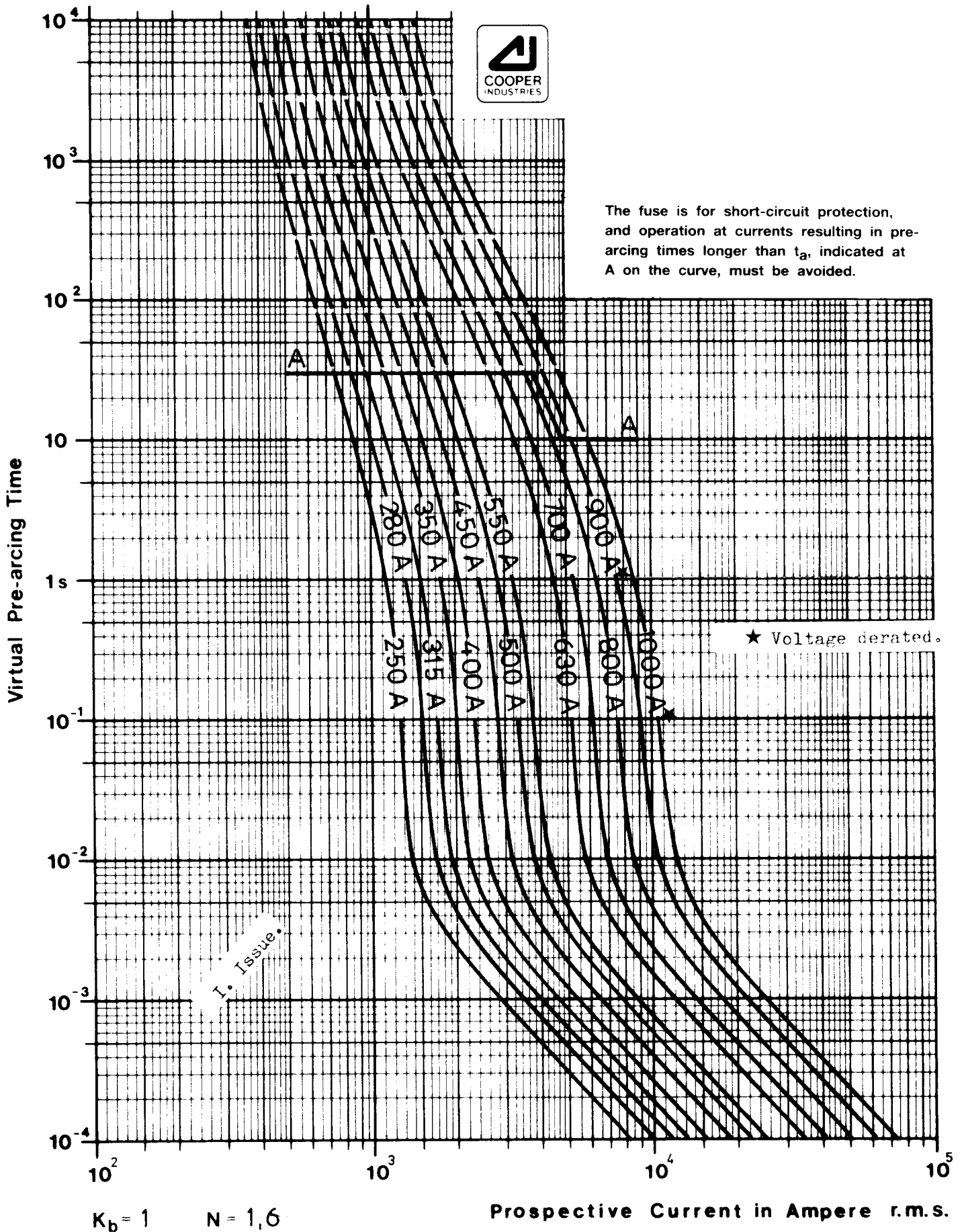
European projection



<b>Bussmann Denmark</b>		Lterbuen 5, DK-2740 Skovlunde Phone: +45 4485 0920 fax +45 4485 0902	
<b>High Speed Fuses Size 2, topindicator Dimension Sketch</b>		Scale	--
		Dwg.	AJ
		Control	TJ
		Approved	PK
			<b>170X0554</b>



The fuse is for short-circuit protection, and operation at currents resulting in pre-arcing times longer than  $t_a$ , indicated at A on the curve, must be avoided.



**BUSSMANN DENMARK**

Literbuen 5, DK-2740 Skovlunde, Int tlf (+45) 42 91 99 00, int fax (+45) 42 91 11 51

High Speed Fuse Size 2    1250V AC

Type: TYPOWER ZILOX

STANDARD RATINGS

Scale:

Drwg. by: *Andersen*

Rev.:

Approved: *[Signature]*

Date: 911030

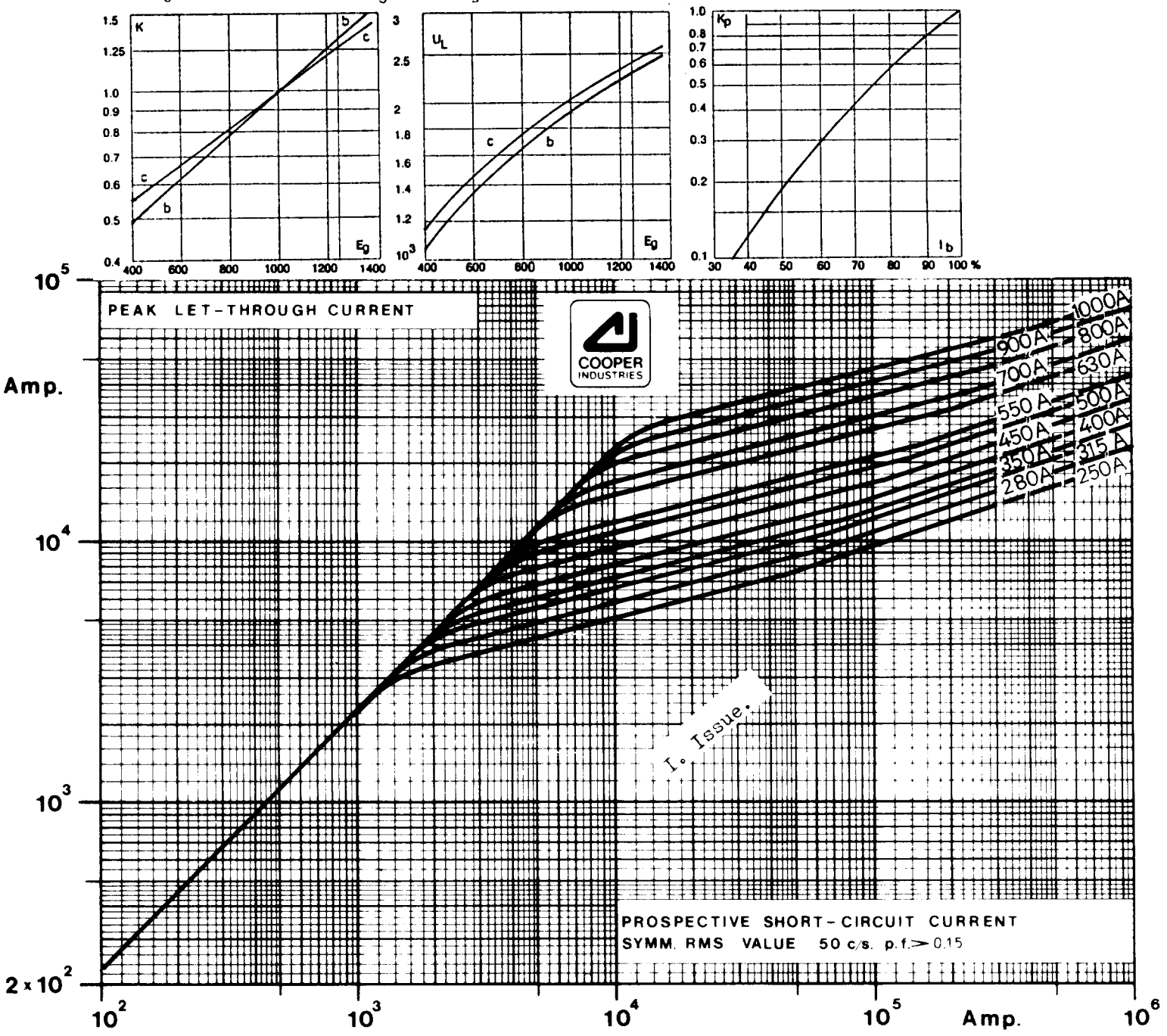
170K6634

Rated current RMS-value A	Pre-arcing integral (from cold) A <sup>2</sup> s	Max. operating I <sup>2</sup> t at 1000V~ A <sup>2</sup> s	Max. operating I <sup>2</sup> t at 1250V~ A <sup>2</sup> s	Losses at rated current W
250	6 500	38 500	51 500	65
280	9 350	55 500	74 500	70
315	13 000	77 500	105 000	75
350	16 500	97 500	135 000	80
400	23 000	140 000	180 000	85
450	34 000	205 000	270 000	90
500	48 000	285 000	380 000	95
550	62 000	370 000	495 000	100
630	115 000	575 000	730 000 <sup>o</sup>	110
700	160 000	795 000	1 050 000 <sup>o</sup>	115
800	245 000	1 200 000	1 550 000 <sup>o</sup>	120
*900	360 000	1 750 000	—————	125
*1 000	480 000	2 350 000	—————	135

For fuses with rated current ≤ 550 A use correction curve marked b).  
For fuses with rated current ≥ 630 A use correction curve marked c).

- E<sub>g</sub>: RMS value of working voltage in V.
- K: Correction factor for max. operating I<sup>2</sup>t
- K<sub>p</sub>: Correction factor for watt losses
- I<sub>b</sub>: RMS value of load current in % of rated current
- U<sub>L</sub>: Max. Arc Voltage in  $\hat{V}$

<sup>1</sup> Voltage derated      <sup>o</sup> Voltage derating in certain versions.



<b>BUSSMANN DENMARK</b> Literbuen 5, DK-2740 Skovlunde, Int tlf (+45) 42 91 99 00, int fax (+45) 42 91 11 51	
High Speed Fuse Size 2    1250V AC Type: TYPOWER ZILOX STANDARD RATINGS	Scale: Drwg. by: <i>Antin</i> Rev.: 9213 <i>Antin</i> Approved: <i>Antin</i> Date: 911030
170K6635	

33.0118 D